



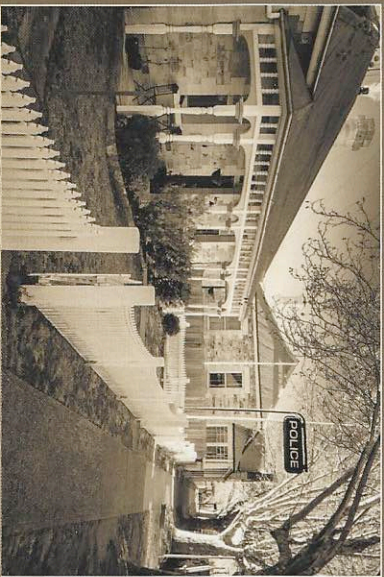
The former Post Office

15. Wesleyan Church

The Wesleyan Church, serving a growing Methodist congregation, was built in 1884. It now serves the Uniting Church congregation. The building replaced the smaller sandstock brick Zion Chapel (1852, now demolished) that stood next to St. Andrews Church. A Temperance Hall (1874) once stood in the present roadway. The Federation-period church manse, on the opposite corner, is of brick construction.

16. The Police Complex

These buildings date from 1872 to 1895, and consist of the Court House; the Constables' House (with sandstone lock up and cells), the Sergeant's House, & the slab stable at the rear. The rear of the Constable's House houses the current Police Station, and the Court House is still in use.



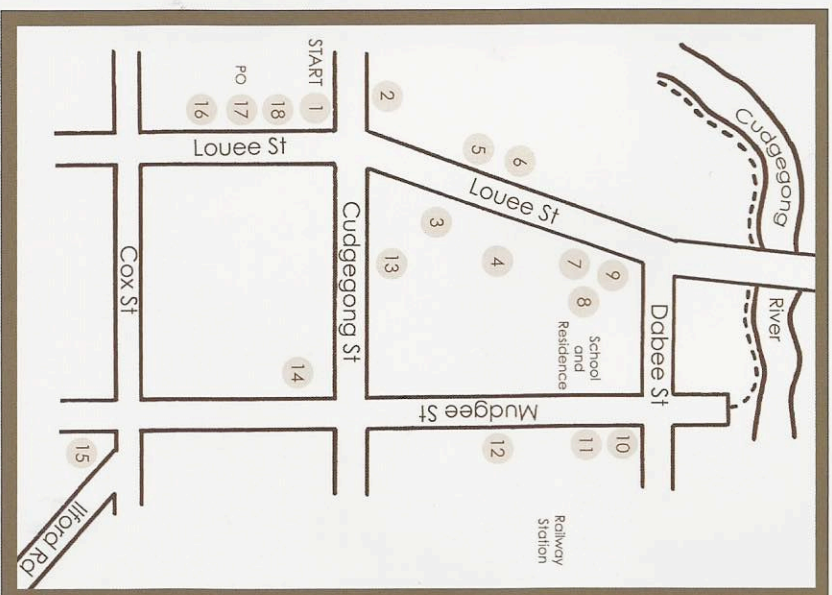
The Police Complex

17. The Post Office

Postal deliveries to Rylstone commenced in 1850. The Post Office and the Telegraph Office were originally separate, but combined in this building built in 1880, along with a residence on the right side. It operated as the town's post office until 2007.

18. The Shire Chambers

Rylstone Shire was formed in 1906 and functioned for 98 years until parts of Rylstone, Mudjee and Merriwa Councils were merged to form Mid-Western Regional Council. The building was erected in 1913 and extended in the 1970s.



Printed by
Rylstone & District Historical Society © 2017
Photos by Karon Grant

RYLSTONE

HERITAGE WALK



The Bridge Hotel



RYLSTONE



Is noted for its lovely stone buildings. Not only are the administrative buildings along Louee Street and the four churches made of local sandstone, but also private homes and businesses. Most were constructed between 1865 and 1895.

Enjoy a walk along the route laid out and view the beauty of the old buildings. Look for the heritage plaques on or adjoining most of the buildings.

1. The School of Arts & Memorial Hall

Now known as the Small Hall, the School of Arts (c1910) was originally a library and centre for meetings. It later functioned as a supper room, for card tournaments, as a Red Cross Centre and Scout and Guide Hall. The 1926 Memorial Hall next door was once used as the town's cinema theatre and is now used as a multi-function Community Hall.

2. Jackson's Corner

Built by John Wesley Jackson, these shops were originally constructed in stone. A disastrous fire in 1927 destroyed the buildings but new ones were erected on the foundations. The stone barn, by the Showground gate, and Jackson's original house with slab walls tucked behind the shops, remain intact in their appearance.

3. The Globe Hotel & Sample Room

In 1880 Mr Holland, an ex-saddler, and his father-in-law Mr Thomas Owen, an ex-policeman, built a sandstone hotel of 12 rooms. It was soon extended to accommodate the increased business brought by the railway in 1884. The entrances and façade were altered in the 1930's due to changes in the street level. The Sample Room next door was constructed to provide a space for commercial travellers to display their wares to local storekeepers.

4. St. Malachy's Church

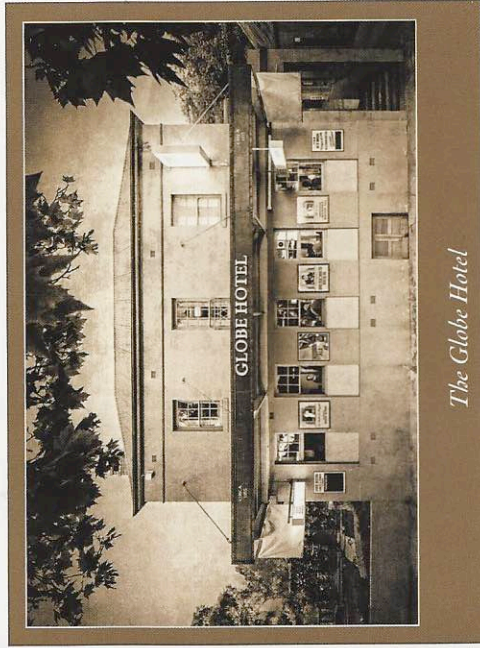
This graceful 1875 Catholic church replaced a small timber slab church built in the 1850's. Designed by Edward Gell, the style is Victorian Gothic, with an Italianate bell tower. An addition to the front was made in 1960 with stone from a private chapel on Monivae, a property near Rylstone.



St Malachy's Church

5. Rylstone Garage

Cars came to Rylstone in the 1920's, and this building was Rylstone's first garage. Removing the cars made a great space for dancing, and the Sample Room opposite was near enough for a supper room. The garage was also the first venue for silent movies before the cinema operated at the Memorial Hall.



The Globe Hotel

6. Flour Mill

This building was originally a three storey flour mill built in 1872 by John Purvis. In 1893 the boiler blew up and rocketed through the wall into the building next door, killing two people. This event, and a fire in 1922, resulted in major changes to the look of the building.

7. Bridge Hotel (Bridge View Inn)

This fine random rubble and dressed sandstone building, built for publican Goodwin Spires Hall, opened in 1872. It once overlooked the timber bridge crossing the Cudgegong River. The dining room contains a rare 1870's mural over the fireplace depicting the bridge, flanked by a cupid, Pan and two nymphs, attributed to Augustus Baker Peirce. The building was used as a bank between 1895 and 1957. Acquired by the Historical Society in the 1960's, it now houses boutique businesses and heritage accommodation.

8. James Nash House

Built for James Nash, blacksmith, this home was originally located near the Showground. The building now houses the Cottage Museum and the family history archives of Rylstone and District Historical Society. It is open Sundays 10am-3pm or by appointment.

9. Hall's Corner

These two early cottages were erected by Goodwin Spires Hall to house his extended family. In later years they were converted to a number of businesses including a newsagency, bootmakers, garage, solicitor's office and bank.

10. The Dry Goods Store

This substantial building was erected for John W Hardwick to house his dry goods and general store. It operated as such until the 1900's. For a number of years it served the community as the local Masonic Hall.

11. Hedgingly

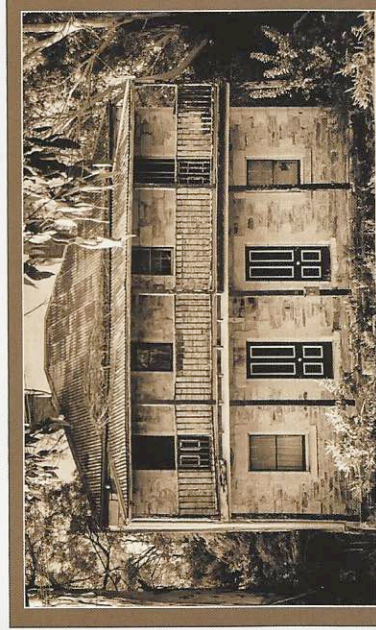
The home of John W Hardwick, commenced in 1859. It was later owned for many years by local general practitioner, Dr. Edmund Howe. Extensive restoration has been undertaken to its interior.

12. Highfield Cottage

This is one of the very early slab cottages of Rylstone still standing, built c1875 by Robert T Highfield.

13. Love's Terrace

This is Rylstone's only terrace style building, built for John Love, a blacksmith. It is two storeys at the front and three storeys at the back, with the original kitchens at the bottom. It was used for many years as a boarding house, with one male boarder breaking his neck falling down the steep stairs.



Love's Terrace

14. St James' Church of England

The church was consecrated in 1864 and features splendid stained glass windows. It was one of the earliest Anglican churches west of the Blue Mountains. At the rear is a small slab building that functioned as both church and Rylstone's first schoolhouse in the 1850's.